



Introduction to Axis Softech

With over a decade of industry experience, versatile range of IT products and services, Axis Softech has a niche for latest technological development and sustainability in the market. With fast growing number of clients, its products and respectively its market, Axis empowers its clients with the latest technology and technological products facilitating each client with their required services.

The prime focus and Axis's orientation for software development has primarily been Health Care and education sector. Axis Softech has numerous experience of working for Healthcare and Educational clients across India and abroad. We have a list of reputed clients from Healthcare and education industry along with successfully running software packages at their end.

Introduction to Central Referral Hospital

Sikkim Manipal Institute of Medical Sciences (SMIMS), located at Tadong, is a constituent college of the Sikkim Manipal University (SMU). SMIMS offers MBBS, BSc. Nursing and Physiotherapy courses, besides M.Sc Programs in Microbiology, Biochemistry, Physiology and Anatomy. The Central Referral Hospital and STNM Hospital in Gangtok offer clinical training opportunities to students.



Sikkim Manipal University
of Health, Medical & Technological Sciences



Sikkim Manipal Institute of Medical Sciences

- Home
- About University
- Courses
- Admissions
- Future Students
- Current Students
- Future Staff
- Current Staff
- Alumni
- Media
- Institutes

- Institute Information
- About Institute
 - About University
 - Manipal Home
 - Organizational Structure
 - Departments
 - Courses
 - Admission Procedure
 - Faculty
 - Placements
 - Scholarships
 - Alumni
 - Results



Notice Board

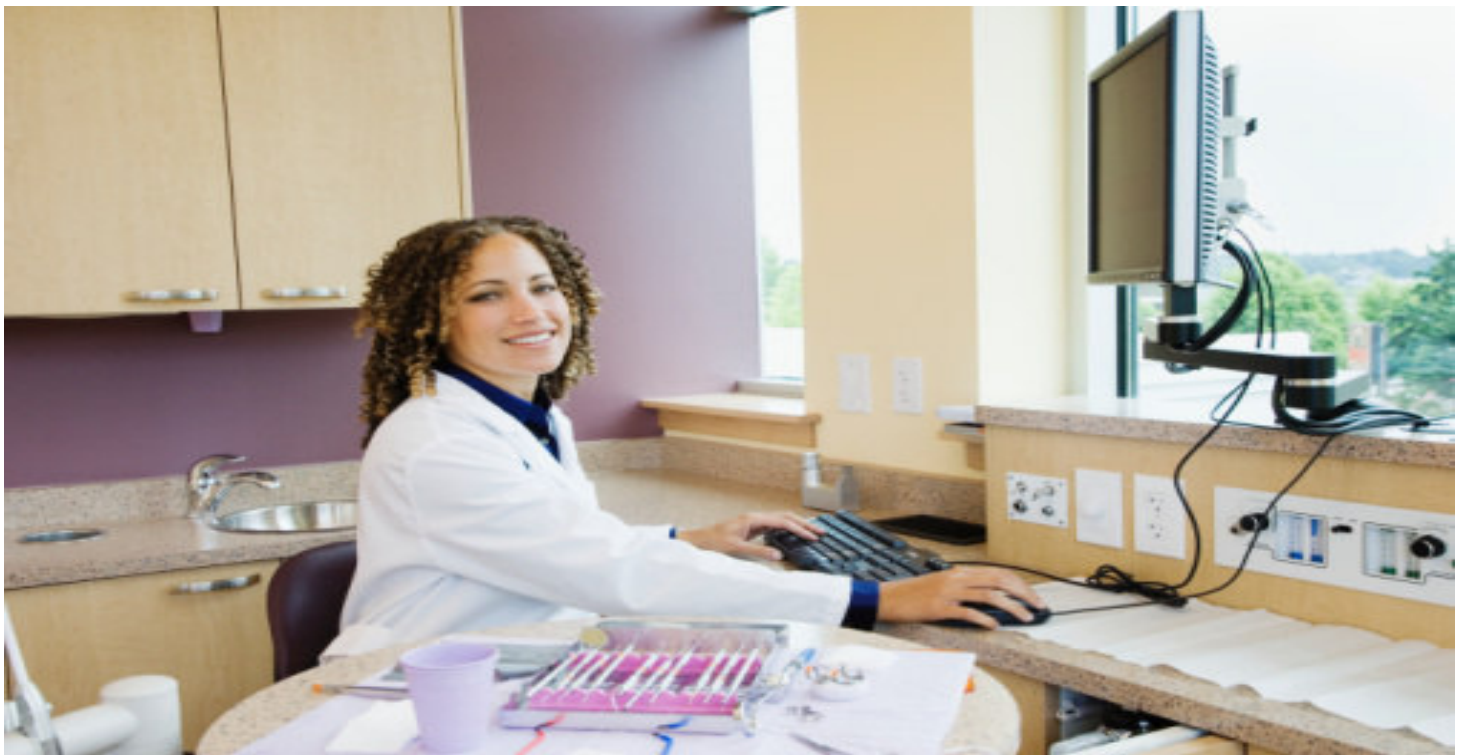
14-08-08 COUNSELLING AND ADMISSION 2008
Medical M.Sc
Integrated M.Sc Biotechnology
Master's in Hospital Management

How the Project was Awarded to Axis Softech

In Year 2005, the Vice Chancellor of SMU decided to automate the **Central Referral Hospital** (a 500+ bedded hospital) completely. The challenge was to adopt a package which was completely web based with the centralized database so that multiple locations can be managed with the same package. Another challenge was to make the project completely system independent and location free. The V.C being a technical czar himself wanted the system to be robust enough so that the user can be governed via Super Admin and all related rights to be transferred to the users as per their portfolio. Different other functionalities like rights transfer of the users, their reporting, MIS and other related functionalities can be tracked.

After looking closely upon the portfolio of Axis Softech, its previous experiences and related projects execution, the competencies & the proven track record since year 2000, to develop huge web based applications which were not just modular in nature but were robust enough to handle huge database at the same time. Axis Softech was amongst the very few and the best companies who developed web based applications. Extended experience of working with top corporate and assisting them to develop their web based automation being the USP of Axis Softech, the company was chosen to develop the product.

Technology & Architecture of the application



Axis Softech has been expert in designing, developing and successfully deploying web based application across the globe. Axis choose to develop the package on Asp.Net & C# with its database on SQL, all of them being Microsoft's latest web based technologies, which supports browser navigation. Axis Softech later was awarded by "**Champion in Web based Application Development Award**" by Microsoft.

ASP.Net, C# & SQL has proved to be the exact software which were required to develop such application and has outstanding performance while and post the deployment. The technology has gone hand to hand with the project requirement and system development. The entire hospital administration has praised and appreciated the technologies which has been used by Axis Softech to develop the application.

Modules which were developed for Central Referral Hospital- Gangtok

FRONT DESK / HELP DESK

Front Desk or Help Desk is one of the most important modules of the entire package; this can also be termed as OPD. This module has several sub modules & helps the front office to execute the following functions.

HOSPITAL – ADMINISTRATION

Entire ERP is regulated by the Administrators of the Hospital, enabling different user rights at different levels. The rights allotment solely depends on the choice of the Administrator. Not only this but other administrative related functionalities are also governed by the same.

ELECTRONIC MEDICAL RECORD (EMR)

EMR is one of the most important module in a Hospital Management system, as this enables the resultant of the entire package to be functionally displayed to the Administrator. We directly integrate machines with our software the details and records to build the MIS.

LABORATORY

Yet another important module of the package, which sync with the package to address LAB tests and respectively results to doctors, billing and at different levels.

RADIOLOGY

Integration with interfaces is primarily what it takes care of. This module primarily generate test orders in different ways.

BILLING

One of the most important module of the entire HMS, which internally interacts with most of the existing modules and fetches data to generate reports. Well integrated with rest of the modules. The data-flow of any services availed by the different department will be automatically passed on to the billing department.

No chance of skipping of charges of any service in the final bill. It takes care of the package service (health card/insurance card policy, corporate policy) with predefined billing policy.

FINANCIAL ACCOUNTING

FA is the base of any organization/institution, which eventually controls all the monetary/finance related functionalities. Here too it is the same and this module gets the input from all the related departments/modules to execute different types of finance related functionality. All of these functionalities are completely automated and yield efficient reports for the management.

FIXED ASSET / EQUIPMENT MANAGEMENT

Equipment and Fixed Asset are two major component of an infrastructure, which needs to have a strict governance

and maintenance structure. Having this in place & properly controlled, the productivity can be greatly increased.

NURSING & WARD MANAGEMENT

Once the patient becomes an IN Patient the nursing and ward management has most important roles to play. In this module we have special provision of operating on all such requirements here under.

BLOOD BANK

This module is internally connected with the concerned departments to deliver the reports of the availability of the blood, requirement, donations, stock etc.

MIS & Dashboard

Management calls most for the only thing which is termed as MIS & Dashboard. This module generates distinct reports which are useful by the management for distinct decision making and etc.

HOUSE KEEPING MODULE

This module controls entire working of housekeeping which includes Kitchen and other consumables of the hospital.

HR & PAYROLL

Human Resource Management is the most important management system in any organization and it always remains a challenge to properly maintain the same. This HR & Payroll management system governs entire HRM section and is inter related with Accounts and Finance to generate salary and related features.

STORE

The Store Management System enables to maintain the Inventory in proper format, this also has provisions like integration with departments and etc.

OT

Operation Theater Modules is one of the important modules to regulate the proper flow of data in and out.

PSYCHIATRY

The diagnosis of a patient needs to be recorded for different operations at different levels.

PHARMACY

A sophisticated module provides two-way billing for OPD and IPD patients. If management desires module can be integrated with the billing module and the front office for final checking and billing at the time of discharge in case of IPD patients.

Challenges faced during development and implementation phase

-Web based technology

In year 2005, adopting a web based technology which supports the web browser was a real challenge for such a huge application and with huge centralized database.

Axis Softech took up the challenge to develop the application with ASP.NET, C# and SQL to develop and successfully won over the challenge.

-Modular Architecture

Completely integrated package which had all modules integrated and interdependent and thus keeping it modular was really

tough but Axis Softech has maintained the 3 tier architecture while developing the application and thus maintained the modular functionality of the modules.

-Centralized Database

Online centralized database, which can have the provisioning of multiple locations under one database was yet another challenge, which was successfully undertaken by the team of Axis Softech.

-Report Extracting from Machines to the software

The then machines did not had the provisioning of exporting report to a third party database, however the team of Axis Softech has proved its best of the competencies to win over this challenge and most of the machines were integrated with the ERP.

Final Deployment & Execution of the Project

Final deployment and execution of the entire application was very smooth, the users have shown their acceptance on a wide level. The users were highly interested in the package and its uses, the enthusiasm shown by the users of the Hospital is to be appreciated on a larger scale.

The application was so designed that the every user had his/her own login id and password to login to his/her account and execute the assigned work. This made the work of the user more exclusive and defined which helped both the management (to allot the job/function) and the users (to execute the assigned job/function).

User Training, Acceptance & UAT Manuals

The user training was for a period of one month during which the expert trainers from Axis Softech was stationed at the client's location and trained the users, by guiding them the usage, data entering and its related reflection & uses. The users were completely trained till Axis Softech received the Acceptance.

Axis Softech released the UAT and Manuals to the users for better understandings and usability of the software by the users.



(For more case studies send your request to sales@axissoftech.com)

For Demonstration Please contact Sales:

**saurav.k@axissoftech.com | sales@axissoftech.com | contact@axissoftech.com
www.hms.axissoftech.com | www.axissoftech.com**

+91 9958891209; +91 129 4086148 / 49 /50; +91 129 3221415

Saurav Kumar (G.M Sales)

14/5, Mathura Road, Faridabad, Haryana- 121003, India. Ph: + 91 129 4086148 / 49 / 50

Visit us: www.hms.axissoftech.com

Mail Us: contact@axissoftech.com